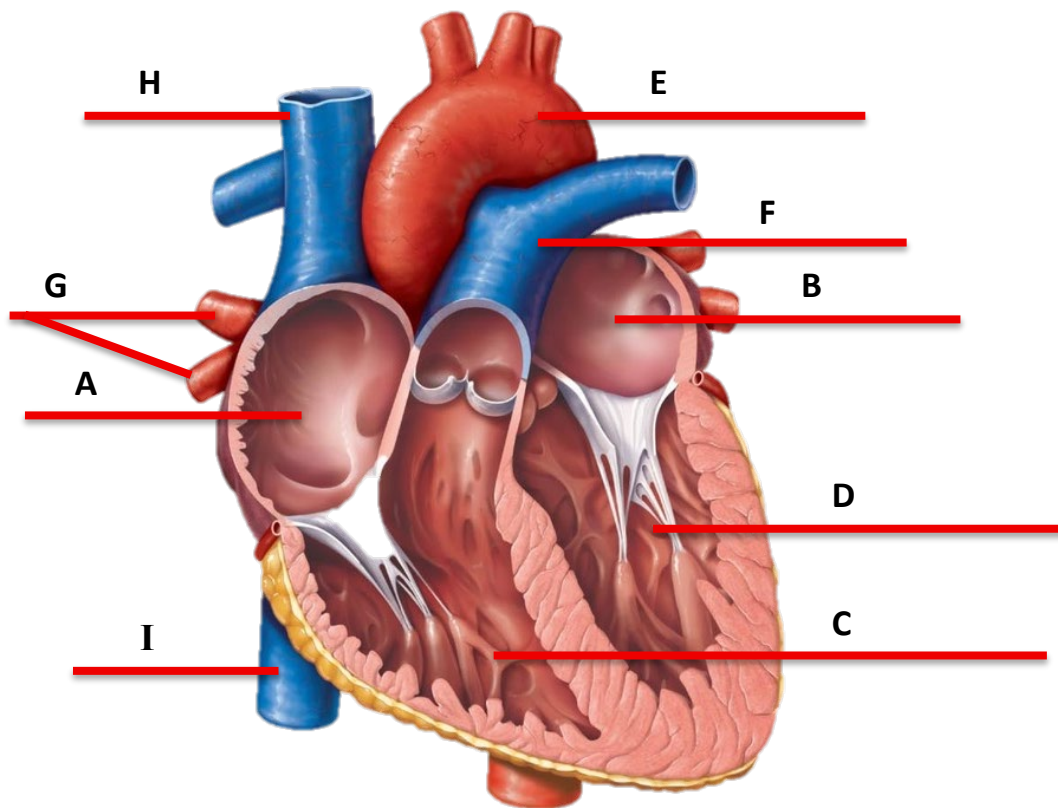


# Home Activities

You can do all the labeling activities if you want, but we recommend that if you are short on time, just pick one.

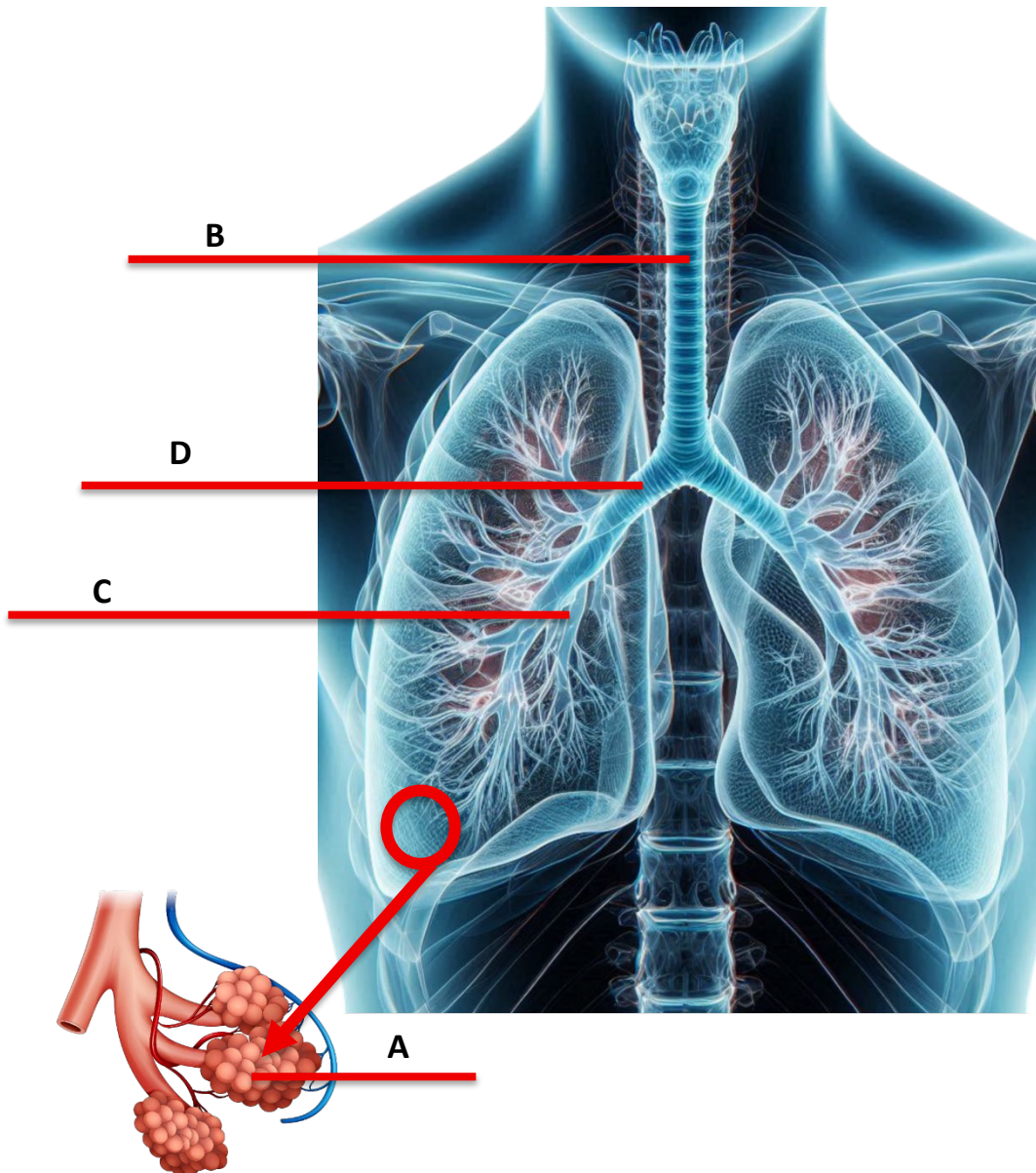
## Label the parts of the heart.

Use these terms: (A) right atrium, (B) left atrium, (C) right ventricle, (D) left ventricle, (E) aorta, (F) pulmonary arteries, (G) pulmonary veins, (H) superior vena cave, (I) inferior vena cava.



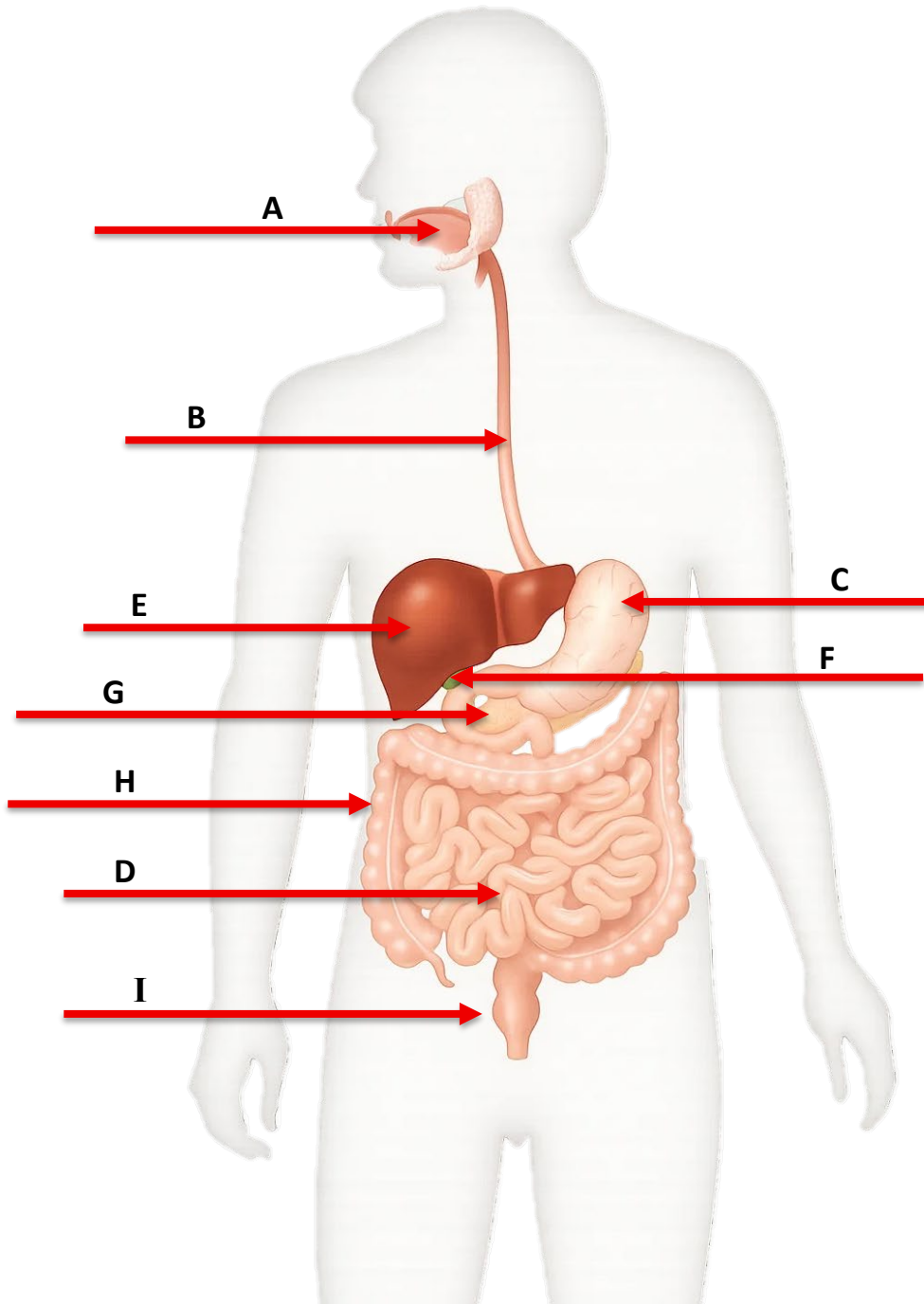
## Label the parts of the lungs.

Use these terms: (A) Alveoli, (B) trachea, (C) bronchioles, (D) bronchi.



## Label the parts of the digestive tract.

Use these terms: (A) Mouth, (B) Esophagus, (C) Stomach, (D) Small Intestine, (E) Liver, (F) Gallbladder, (G) Pancreas, (H) Large Intestine (Colon), (I) Rectum.





## **Pre-Assessment Quiz: Circulatory, Respiratory & Digestive Systems**

### **Answers**

1. What is the main function of the cardiovascular (circulatory) system?
  - A. To produce hormones
  - B. To deliver oxygen and nutrients and remove waste**
  - C. To control body temperature
  - D. To protect against infection
  
2. Which side of the heart pumps oxygen-poor blood to the lungs?
  - A. Left atrium and ventricle
  - B. Right atrium and ventricle**
  - C. Both atria
  - D. Both ventricles
  
3. Which type of blood vessel always carries blood away from the heart?
  - A. Veins
  - B. Arteries**
  - C. Capillaries
  - D. Valves
  
4. What feature do veins have that arteries do not, to prevent backflow of blood?
  - A. Thick walls
  - B. Valves**
  - C. Elastic tissue
  - D. Pacemaker cells
  
5. Where does the exchange of oxygen, carbon dioxide, nutrients, and wastes occur?
  - A. Arteries
  - B. Veins
  - C. Capillaries**
  - D. Heart chambers

6. Which muscle is the primary driver of breathing, contracting and relaxing under the lungs?
- A. Sternocleidomastoid
  - B. Intercostal muscles
  - C. Diaphragm**
  - D. Abdominal muscles
7. What is the role of alveoli in the respiratory system?
- A. To produce sound for speech
  - B. To carry air into the lungs
  - C. To exchange oxygen and carbon dioxide with the blood**
  - D. To warm and filter incoming air
8. Which organ produces bile to help break down fats?
- A. Stomach
  - B. Gallbladder
  - C. Liver**
  - D. Pancreas
9. What is the main site of nutrient absorption in the digestive system?
- A. Stomach
  - B. Small intestine**
  - C. Large intestine
  - D. Rectum
10. Which part of the digestive system contains immune tissues (like Peyer's patches) that help monitor and fight microbes?
- A. Esophagus
  - B. Large intestine
  - C. Stomach
  - D. Small intestine**