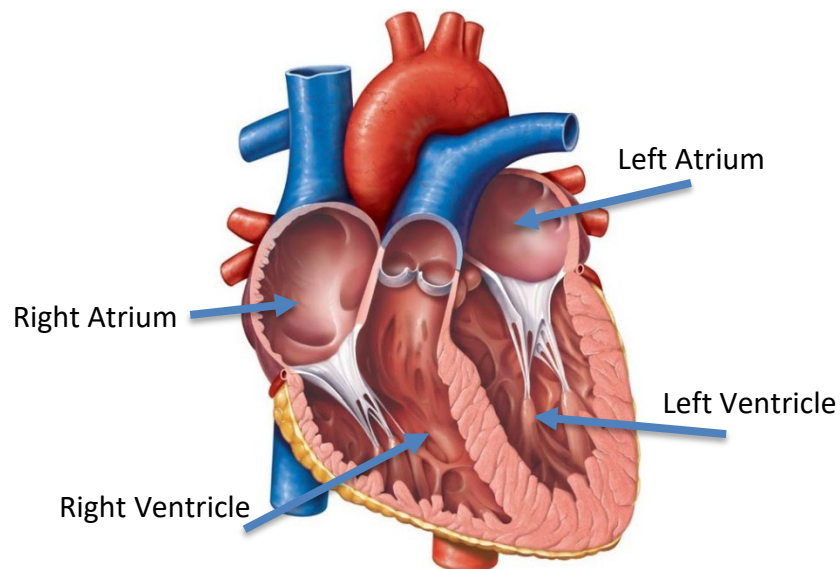


Anatomy Week 4: Cardiovascular and Immune System

Home Activities

- Label the parts of the heart. Use these terms: right atrium, left atrium, right ventricle, left ventricle
- Watch these videos!
 - The Beating Heart
<https://iframe.mediadelivery.net/play/479549/47cfe2cb-c4ed-4c6b-ab50-621c99ce2b45>
 - The Electrical Heart
<https://iframe.mediadelivery.net/play/479549/cad0ad51-c990-4c0d-92a4-7b3a49e4b995>



Coming up

- Zoom on Monday
- Respiratory and Digestive System
- Anatomy Unit Review

Pre-Assessment Quiz: Cardiovascular and Immune Systems

1. What is the main job of the cardiovascular system?
 - A. To protect the body from germs
 - B. To digest food
 - C. To move oxygen, nutrients, and waste through the body
 - D. To transport oxygen and nutrients to tissues and remove waste**

2. Which organ acts as the “pump” of the circulatory system?
 - A. Lungs
 - B. Heart**
 - C. Brain
 - D. Stomach

3. Which blood vessels carry blood **away** from the heart?
 - A. Veins
 - B. Arteries**
 - C. Capillaries
 - D. Valves

4. What is the main job of capillaries?
 - A. To carry blood back to the heart
 - B. To store oxygen
 - C. To exchange oxygen, nutrients, and waste with tissues**
 - D. To control heart rate

5. Why do veins have valves?
 - A. To increase blood pressure
 - B. To make blood flow faster
 - C. To deliver oxygen
 - D. To prevent blood from flowing backward**

6. Which of the following helps veins move blood back to the heart?

A. The aorta

B. Skeletal muscle contractions

C. Thick artery walls

D. Stomach acid

7. What does the innate immune system do?

A. Remembers germs for next time

B. Destroys red blood cells

C. Acts fast to protect against many kinds of germs

D. Makes antibodies for specific germs

8. Which immune cells make antibodies?

A. Macrophages

B. Neutrophils

C. T Cells

D. B Cells

9. Which organs are part of the lymphoid system that store or filter germs?

A. Heart and lungs

B. Lymph nodes, spleen, tonsils, appendix

C. Stomach and intestines

D. Kidneys and bladder

10. Where do most immune cells live in the body?

A. The brain

B. The heart

C. The gut (intestines)

D. The skin